

Perimeter Site Improvements

Phase 1 - 5

Architect: W+W Architects and Planners
Construction Manager: Bernards
Contractor: Woodcliff Corporation
Contract Start: December 05, 2012
Contract Completion: December 31, 2013

Anticipated Milestone Activities: Phase 1, 2, 3 & 4

09.20.13 – Phase 4 Survey
 09.23.13 – Phase 4 Rough Grade

Scope: New asphalt paving, curbs, gutters and concrete paver drive entrances will be constructed to enhance the traffic flow throughout the Campus. Boarding the property; masonry walls and pilasters with decorative tile insets will be installed. Illuminated 'Santa Ana College' signage will be mounted on the masonry walls at various entrances to the College. New site lighting, irrigation and landscaping will complete the design.

Traffic Alert:

- *Campus Entrance at 17th Street is opened to vehicle access. Temporary pedestrian walkway and directional signage is in place.*
- *Parking Lot 7 approx. 111 parking stalls will be unavailable due to upcoming construction activities associated with Phase 4.*

Status: Phase 1, 2 and 3 of this project is nearing completion and has been opened for access to vehicles and pedestrians. Recent activities for each phase of construction have been listed below:

- Phase 2 – Art pedestals form and pour
- Phase 2 – Landscape Root Barrier Installation
- Phase 2 – Irrigation Main Line at Building 'A'
- Phase 3 – Trees and Shrubs Installation (on-going)
- Phase 4 – Mobilization
- Phase 4 – Tree Demolition
- Phase 4 – Hardscape Demolition and Removal





Building G Misc. Upgrades

Bldg G Misc. Upgrades

Architect:	IBI Group, Inc.	Anticipated Milestone Activities:
Construction Manager:	Bernards	09.24.13 – Staircase Concrete Pour
Contractor:	Optima RPM, Inc.	09.23.13 – Storefront System Delivery
Contract Start:	May 27, 2013	
Contract Completion:	September 14, 2013	

Scope: Building G Miscellaneous Upgrades encompass work in and around the existing gymnasium built in 1954. The exterior work consist of new monumental stair at the north side of the building leading to a new storefront entrance, exterior lighting upgrade, concrete flat work, replacing of doors and windows in addition to some door hardware upgrades. Interior work includes two classroom renovations.

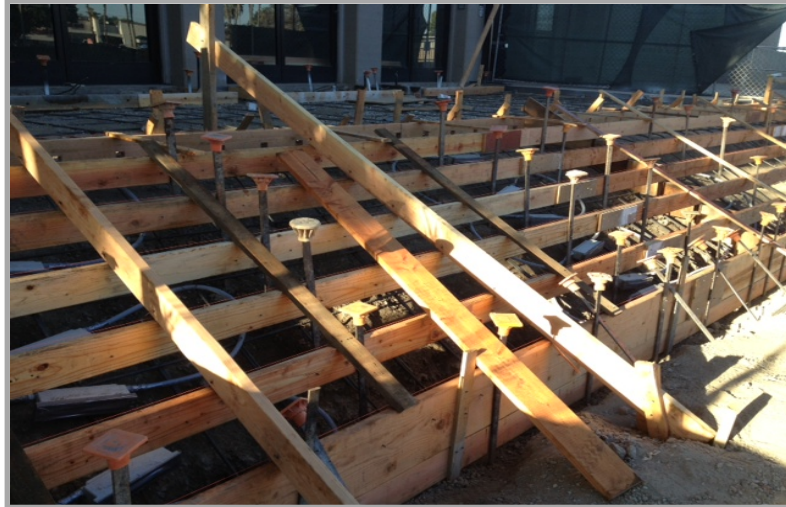
Traffic Alerts:

- Construction traffic is ongoing into parking lot 1.

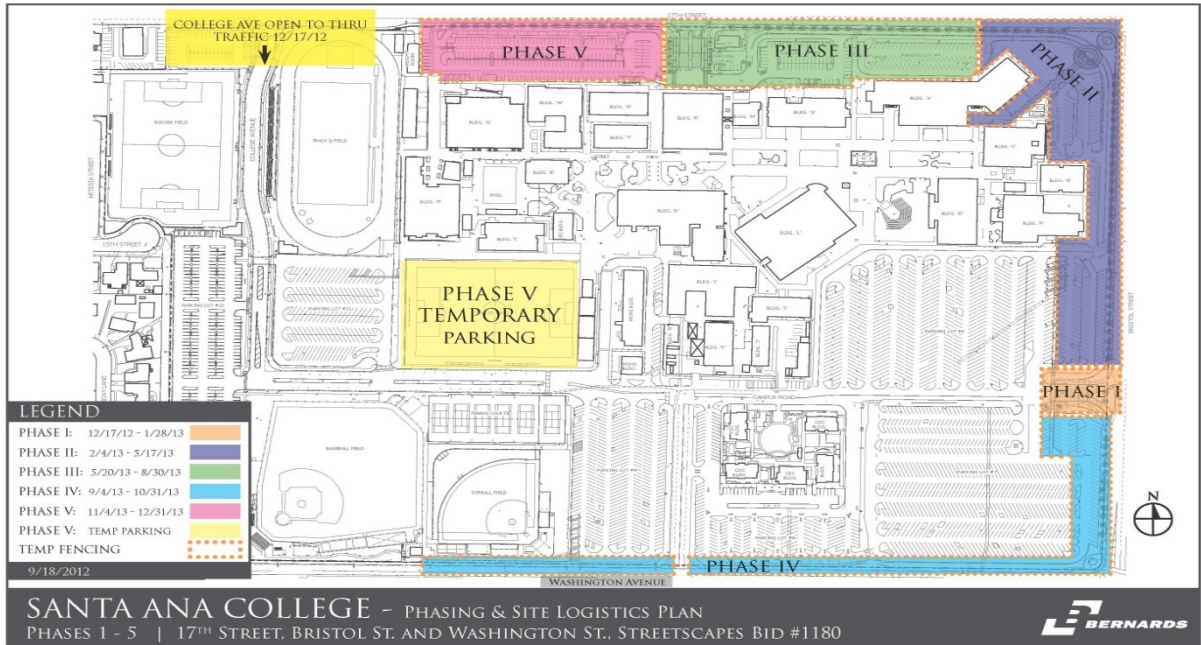
Status: The recent construction activities are listed below:

- Entrance Staircase Survey / Layout
- Entrance Staircase Formwork
- Entrance Staircase Electrical Step Lights
- Exterior Gutter Installation (S/W/E)
- Interior / Exterior Door Grouting
- Interior / Exterior Door Hardware Installation





Santa Ana College Phasing Plan



Phase 1-5

Perimeter Site Improvements